

The route consists of a tidal river that connects the village of Bear River to Smiths Cove on the Annapolis Basin. Noted as *"The Rhine"* of Nova Scotia, the river nestles between steep, rolling hills and served as an important and historical canoe route for the Mi'kmaw people of the area, connecting the Annapolis Basin with inland waterways and the province's South Shore. Housing development is evident, yet due to its tidal nature, the route offers a variety of flora and fauna. Mid-way along the river, extensive marsh banks harbour waterfowl.

At high tide, the river is navigable at all locations for two to three hours. Water levels between high and low tide will drop approximately 5 metres. At low tide, the water channel narrows, exposing mud flats and marsh areas, but remains navigable. However, exiting the river becomes a problem, as the soft clay flats make walking very difficult. If using the Bear River Entry, Exit Point, it is recommended that canoeists launch two to three hours before, and exit two hours after high tide. Launching and exiting at the Highway 101 bridge Entry, Exit Point is not affected by the tide. Canoeists are advised to check local tide tables, and cautioned that unattended canoes near the shoreline will quickly float away on a rising tide. Current action at the mouth of the river near the Highway 101 bridge is noticeable but does not pose a serious hazard. The route is prone to strong winds, and consideration to weather conditions is advised.

Length: Bear River to Smiths Cove: 7 km
Time: 1 day

Approach: South from Annapolis Royal 7 km along Highway No. 8 to juncture of Highway 101. West along Highway 101, 22 km to Victoria Bridge and the Bear River.

Entry, Exit Points:

Bear River: Exit 24 at Smiths Cove, and south along River Road 6 km to village of Bear River. Left (EAST) across bridge, and left (NORTH) on Wharf Street. Launch at boat ramp.

Victoria Bridge: Exit 23 at Deep Brook to intersection of Highway No. 1. Left (WEST) along Highway No. 1, 700m to intersection of road to bridge. Turn to right along road, 1.5 km to base of Victoria Bridge at river. Launch at boat ramp.

Parking: At Entry, Exit Points

Landmarks:

1. Visitor Information Centre - Oakdene Centre
2. Highway 101 bridge

Route Classification: Intermediate

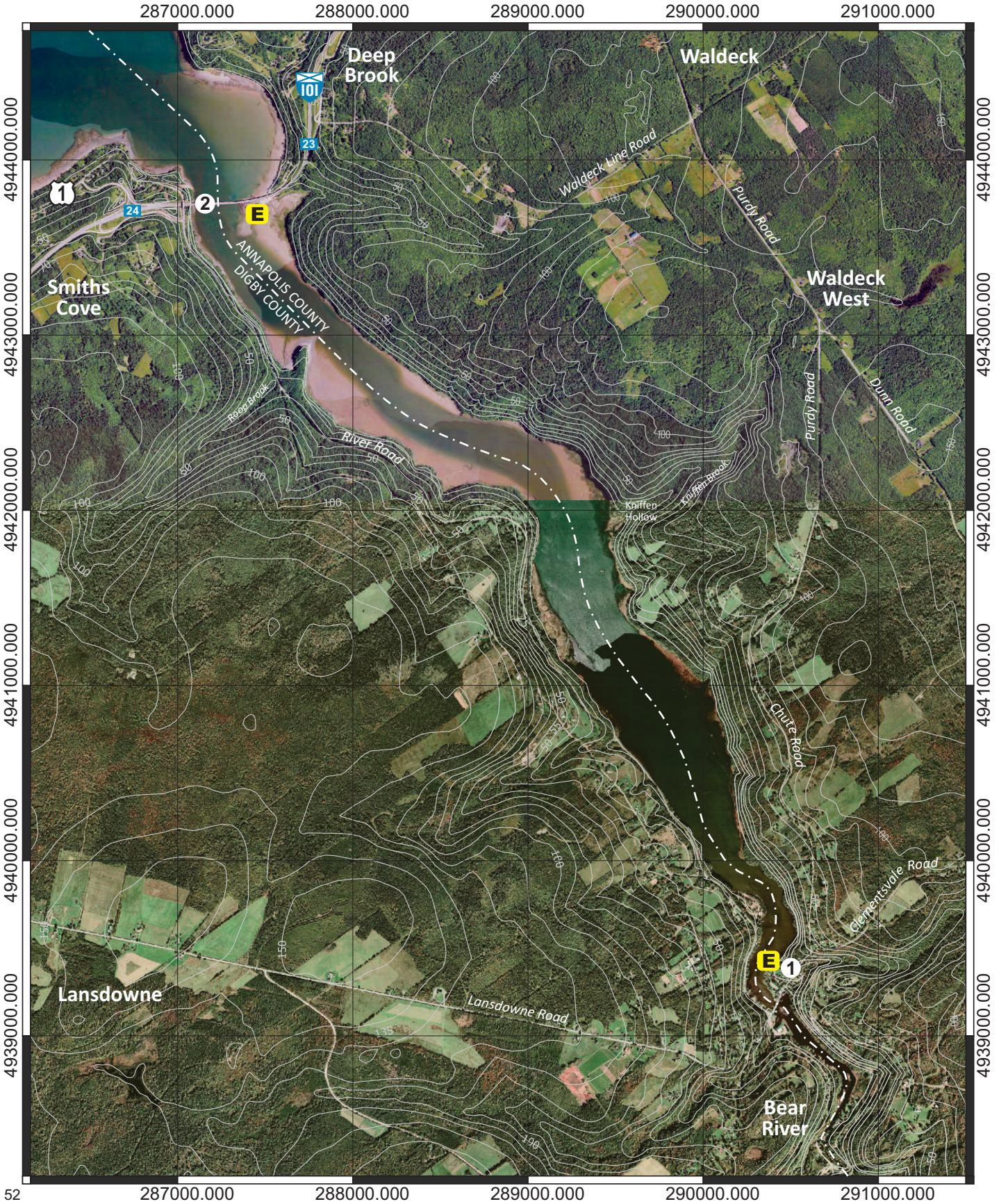
Portage Information: No portaging required.

Bear River



SCALE 0 1000 METRES

Route 9



Disclaimer

The Municipality of the County of Annapolis does not have control over the canoe routes, portages or wilderness tent areas listed in this guide, and therefore assumes no responsibility for the safety of the canoeist paddling the route, walking the portage, or using the wilderness tent areas.

We recommend that users approach all canoe routes and wilderness tent areas in a safe and responsible manner, and conduct visual inspections whenever possible and practical.

Conditions can change through fluctuating water levels, addition of natural debris, and commercial logging activity.

As we are not the owners of any of these lands or routes, any special arrangements must be made directly with the owners and you are accountable to them for any damage, loss or other problems that you may cause.

Although the information in this guide is believed to be accurate, we assume no liability for any errors or omissions that may exist, or for changes that may have occurred on the routes after the publication of this guide.

We recommend, as a supplement to the information herein, that you use Natural Resources Canada 1:50,000 topographical series maps of the general canoe routes.

Annapolis County Recreation Services requests that you read the sections on Safety, Equipment, Trip Planning and Wilderness Ethics before you travel on the lakes and waterways of the region.

Always tell someone where you are going and when you are returning. Please be aware that many portages/canoe carries are not marked.

Map Legend

Entry, Exit Point



Landmark



Portage



River Section



Rapids



Existing Tentsite



Beach



Highway 101, Exit



Public Highway



Highlighted for clarity:



Municipal Boundary



Contour/ Elevation



Grid North



Grid Line



Scale Bar

