

This route consists of two man-made lakes that are dammed portions of the Bear River, and that serve as holding ponds for the Nova Scotia Power Sissiboo Development. The ponds are not connected by a navigable waterway, and separate launches into each will be required.

First Pond is quite small in area, and offers sheltered paddling, even in difficult weather conditions. The pond has some cottage development. Second Pond offers small islands and a canal to explore. The Sissiboo Development was one of the first power systems established in the province and, although these ponds are flooded areas, they show minimal shoreline impact.

Length:

First Pond: 1.5 km

Second Pond: 3 km

Time: 1 day

Approach:

South from Annapolis Royal 7 km along Highway No. 8 to juncture of Highway 101. West along Highway 101, 22 km to Exit 24 at Smiths Cove. South along River Road 6 km to village of Bear River.

Entry, Exit Points:

First Pond: East from bridge at Bear River, 5 km along Clementsvale Road to intersection of Greenland Road. Right (SOUTH) along Greenland Road, 3 km to intersection of Negro Line Road. Right (WEST) along gravel road, 3 km to intersection of road to dam. Right (NORTH) along dirt road, 500m to shore. Launch at small beach.

Second Pond: East from bridge at Bear River, 5 km along Clementsvale Road to intersection of Greenland Road. Right (SOUTH) along Greenland Road, 3 km to intersection of Negro Line Road. Right (WEST) along gravel road, 5 km to canal. Cross over pipeline and continue 1 km to shore. Launch at beach.

Parking:

At Entry, Exit Points

Landmarks:

1. NSP Power Generating Station

Route Classification:

Novice

Portage Information:

No portaging required.

First and Second Pond



SCALE 0 1000 METRES

Route 8

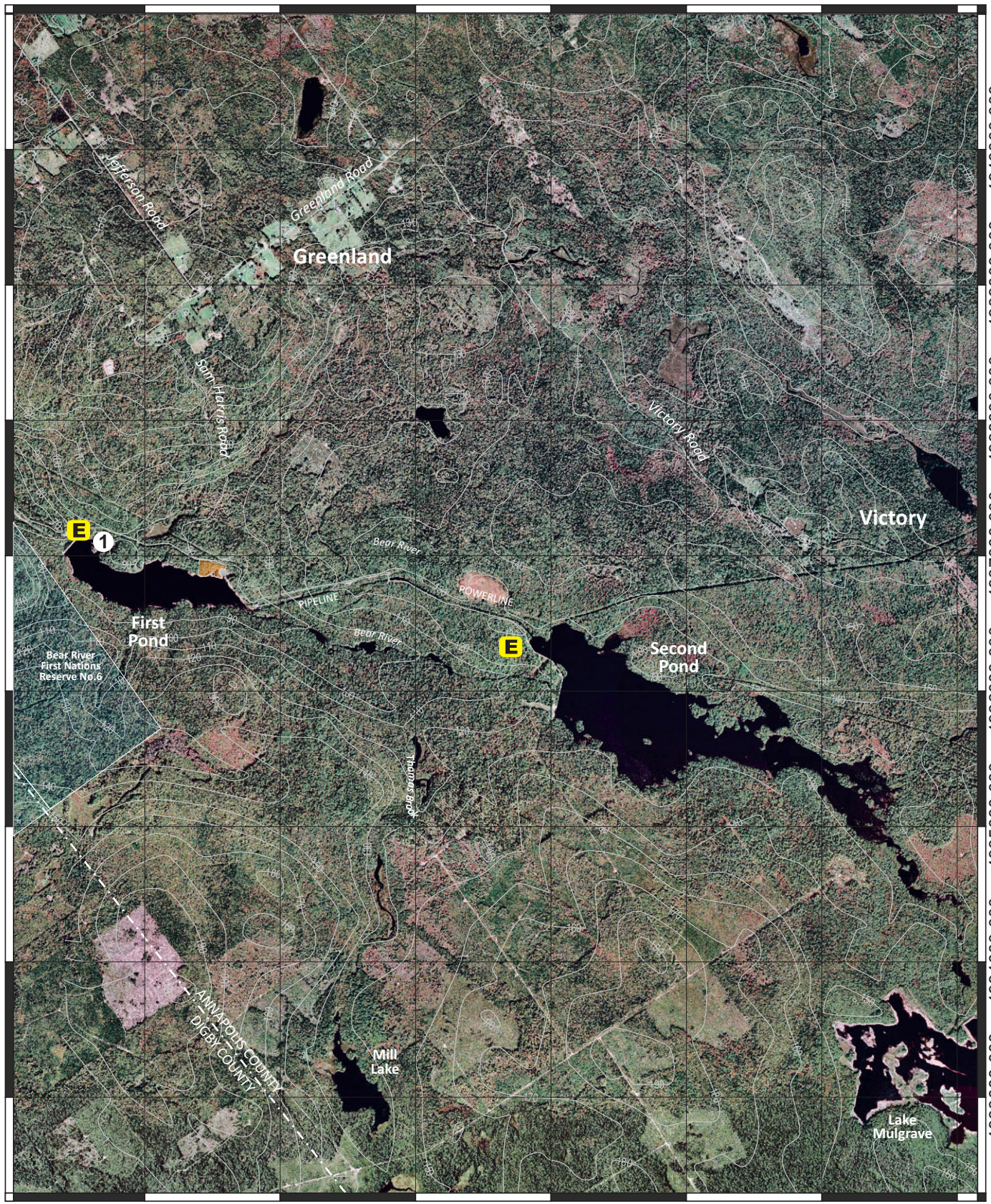
294000.000 295000.000 296000.000 297000.000 298000.000 299000.000

4940000.000
4939000.000
4938000.000
4937000.000
4936000.000
4935000.000
4934000.000
4933000.000

4940000.000
4939000.000
4938000.000
4937000.000
4936000.000
4935000.000
4934000.000
4933000.000

50

294000.000 295000.000 296000.000 297000.000 298000.000 299000.000



Disclaimer

The Municipality of the County of Annapolis does not have control over the canoe routes, portages or wilderness tent areas listed in this guide, and therefore assumes no responsibility for the safety of the canoeist paddling the route, walking the portage, or using the wilderness tent areas.

We recommend that users approach all canoe routes and wilderness tent areas in a safe and responsible manner, and conduct visual inspections whenever possible and practical.

Conditions can change through fluctuating water levels, addition of natural debris, and commercial logging activity.

As we are not the owners of any of these lands or routes, any special arrangements must be made directly with the owners and you are accountable to them for any damage, loss or other problems that you may cause.

Although the information in this guide is believed to be accurate, we assume no liability for any errors or omissions that may exist, or for changes that may have occurred on the routes after the publication of this guide.

We recommend, as a supplement to the information herein, that you use Natural Resources Canada 1:50,000 topographical series maps of the general canoe routes.

Annapolis County Recreation Services requests that you read the sections on Safety, Equipment, Trip Planning and Wilderness Ethics before you travel on the lakes and waterways of the region.

Always tell someone where you are going and when you are returning. Please be aware that many portages/canoe carries are not marked.

Map Legend

Entry, Exit Point



Landmark



Portage



River Section



Rapids



Existing Tentsite



Beach



Highway 101, Exit



Public Highway



Highlighted for clarity:



Municipal Boundary



Contour/ Elevation



Grid North



Grid Line



Scale Bar

