

Route 5 is also catalogued in this guide as an overnight route, but offers several day trip opportunities as well.

The route consists of a long, meandering stillwater and five lakes, four of which are relatively small. The fifth, known locally as Big Lake, was created when Nova Scotia Power flooded the original Mulgrave and Fairbanks Lakes, and forms part of their Sissiboo Development. Flanders Meadows offers several kilometres of flat water paddling through a marsh environment. The Northeast Lakes are two separate lakes connected by a navigable runs, with rocky shorelines and secluded coves. Big Lake is relatively shallow and open to prevailing westerly winds, and therefore must be approached with caution and attention to wind and weather conditions, but offers many kilometres of varying shoreline and islands to explore.

Length: 22 km
Time: 2-3 days

Approach: South from Annapolis Royal approximately 20 km on Highway No. 8 to South Milford. South from South Milford on Highway No. 8, 2 km to intersection of Victory Road.

Entry, Exit Points:

Sundown Lake: West from Highway No. 8 on Victory Road, 3 km to logging road on left (south) side of Victory Road, approximately 350 m east of Sundown Lake. South along logging road 750m to Carry on left. Carry 140 m to Weyland Lake.

Northeast Lakes: West from Highway No. 8 on Victory Road, 5 km to logging road posted with Yield sign, on left (SOUTH) side of Victory Road. South on woods road 3.5 km to bridge at Northeast Lakes. Launch at bridge.

Lake Mulgrave: West from Highway No. 8 on Victory Road, 15 km to Mulgrave Lake Road. Left (SOUTH) on Mulgrave Lake Road, 4.5 km to second dam. Launch at beach.

Parking: Northeast Lakes: Along logging road across bridge.
 Lake Mulgrave: At second dam.

Landmarks: 1. Yield sign at road intersection.

Route Classification: Intermediate

Portage Information:

1. 140m On left (EAST) side of logging road
2. 360m Cove on SOUTH side of Weyland Lake
3. 100m On EAST side of Oak Lake
4. 350m On SOUTH side of Oak Lake.
5. 340m On left (SOUTH) side of outlet of Northeast Lakes. Carry not maintained and is difficult to follow.

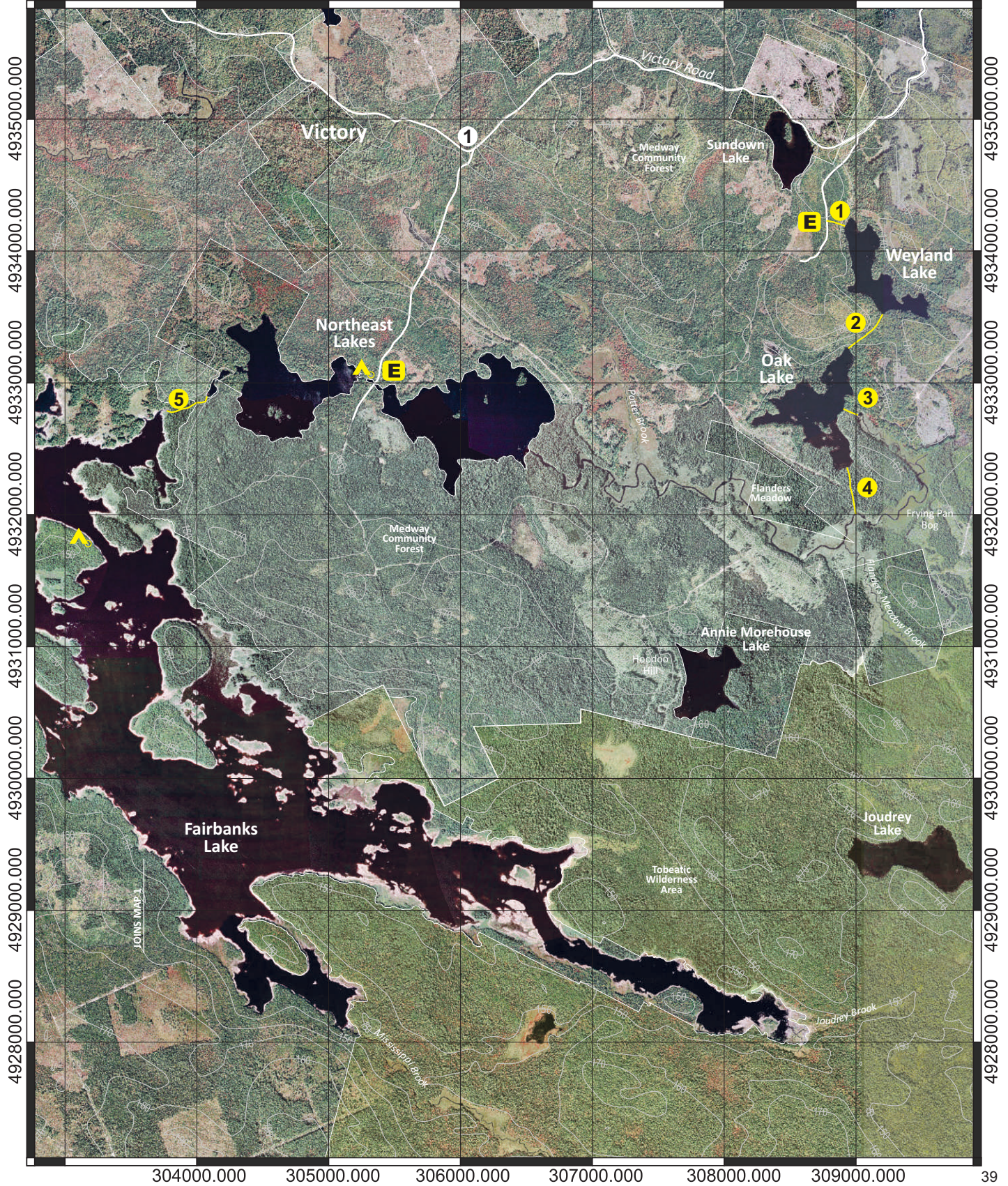
Flanders Meadows



SCALE 0 1000 METRES

Route 5, Map 1

303000.000 304000.000 305000.000 306000.000 307000.000 308000.000 309000.000

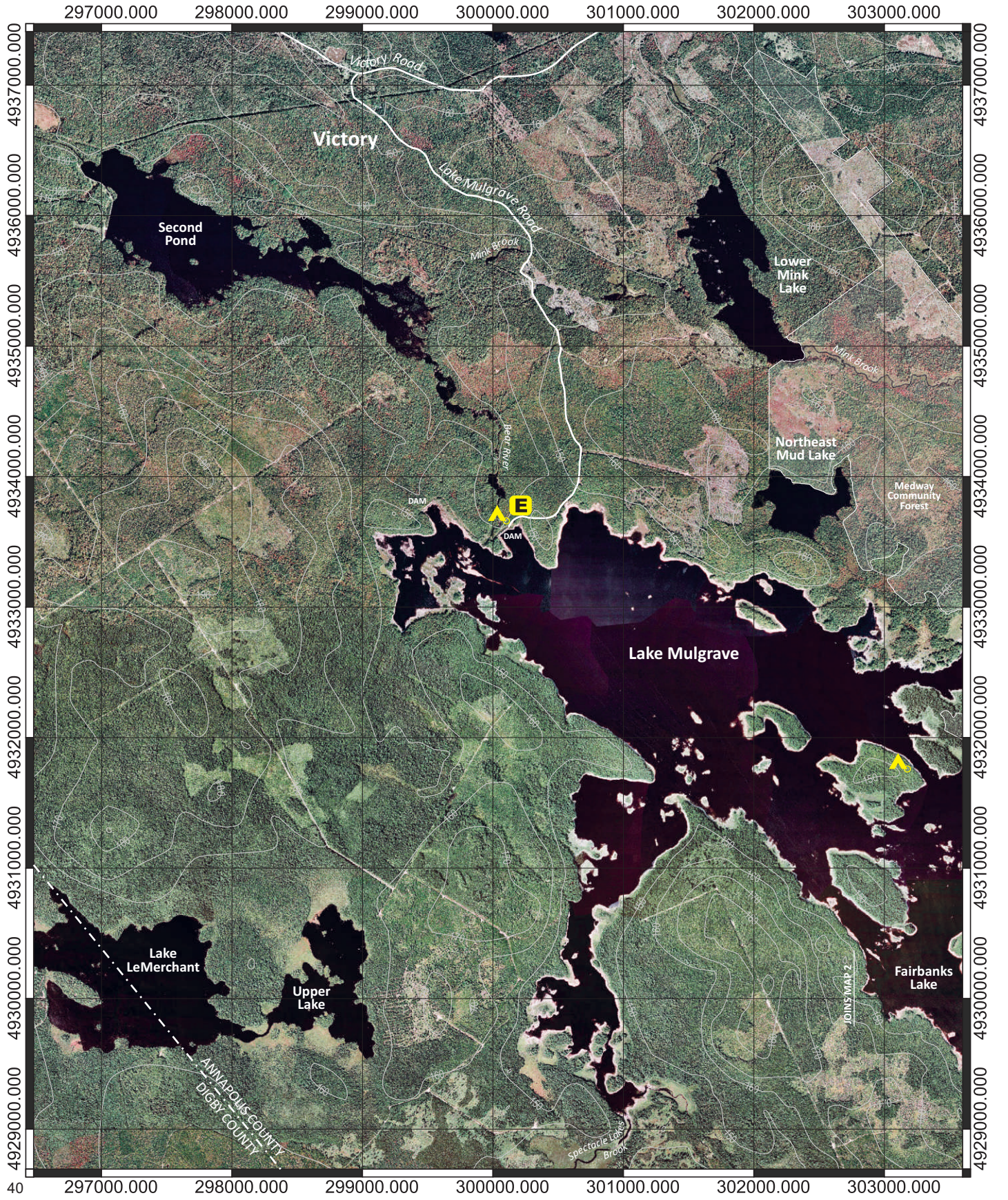


Flanders Meadows



SCALE 0 1000 METRES

Route 5, Map 2



Disclaimer

The Municipality of the County of Annapolis does not have control over the canoe routes, portages or wilderness tent areas listed in this guide, and therefore assumes no responsibility for the safety of the canoeist paddling the route, walking the portage, or using the wilderness tent areas.

We recommend that users approach all canoe routes and wilderness tent areas in a safe and responsible manner, and conduct visual inspections whenever possible and practical.

Conditions can change through fluctuating water levels, addition of natural debris, and commercial logging activity.

As we are not the owners of any of these lands or routes, any special arrangements must be made directly with the owners and you are accountable to them for any damage, loss or other problems that you may cause.

Although the information in this guide is believed to be accurate, we assume no liability for any errors or omissions that may exist, or for changes that may have occurred on the routes after the publication of this guide.

We recommend, as a supplement to the information herein, that you use Natural Resources Canada 1:50,000 topographical series maps of the general canoe routes.

Annapolis County Recreation Services requests that you read the sections on Safety, Equipment, Trip Planning and Wilderness Ethics before you travel on the lakes and waterways of the region.

Always tell someone where you are going and when you are returning. Please be aware that many portages/canoe carries are not marked.

Map Legend

Entry, Exit Point



Landmark



Portage



River Section



Rapids



Existing Tentsite



Beach



Highway 101, Exit



Public Highway



Highlighted for clarity:



Municipal Boundary



Contour/ Elevation



Grid North



Grid Line



Scale Bar

