

Sandy Bottom Lake offers a variety of recreational experiences for the whole family. Raven Haven Beachside Family Park is both a day and overnight recreational park owned and operated by the Municipality of the County of Annapolis.

The park site offers camping that includes full service and unserviced tent/trailer sites, cabin rentals and a hostel, supervised swimming, canoe, kayak and pedal boat rentals, washrooms, a canteen and picnic facilities. Raven Haven is a member of Hosteling Canada and Hosteling International.

The park offers public access to the lake throughout the paddle season. It is open between mid June to Labour Day weekend.

The lake, although densely populated in some areas for cottage development, has many natural and secluded sections of shoreline that provide an opportunity for a quiet paddle. Sandy Bottom Lake is also the connection to the Milford Lakes and Mersey River routes. During higher water, it is possible to paddle across the lake, through Charlton Meadows, and with a few short portages, link into Lily Lake at Highway 8 and beyond.

Many prefer to explore the lakeshore perimeter, small coves and the island in the western section of the lake. Charlton Meadows is a highlight for many paddlers, as once you paddle across the lake and enter the narrows, you are in the middle of the “wilderness” where turtles and waterfowl can be observed. Due to beaver activity, the narrows are sometimes blocked, necessitating a small lift. The Meadows are definitely worth an exploration.

Length: 2.5 km
Time: 1 day

Approach: South from Annapolis Royal approximately 22 km along Highway No. 8 to South Milford. Turn WEST on Virginia Road.

Entry, Exit Point:
Raven Haven: 2239 Virginia Road. Ph: 902-532-7320 or 902-665-5010

Parking: At Entry, Exit Point.

Landmarks:

1. Raven Haven Beachside Family Park
2. South Milford Community Hall

Route Classification: Novice

Portage Information:

1. 90 m Carry through Raven Haven property to lake.
2. 190 m On left (NORTH) side of runs.

Sandy Bottom Lake



SCALE 0 1000 METRES

Route 3

306000.000

307000.000

308000.000

309000.000

4942000.000

4941000.000

4940000.000

4939000.000

4938000.000

4942000.000

4941000.000

4940000.000

4939000.000

4938000.000

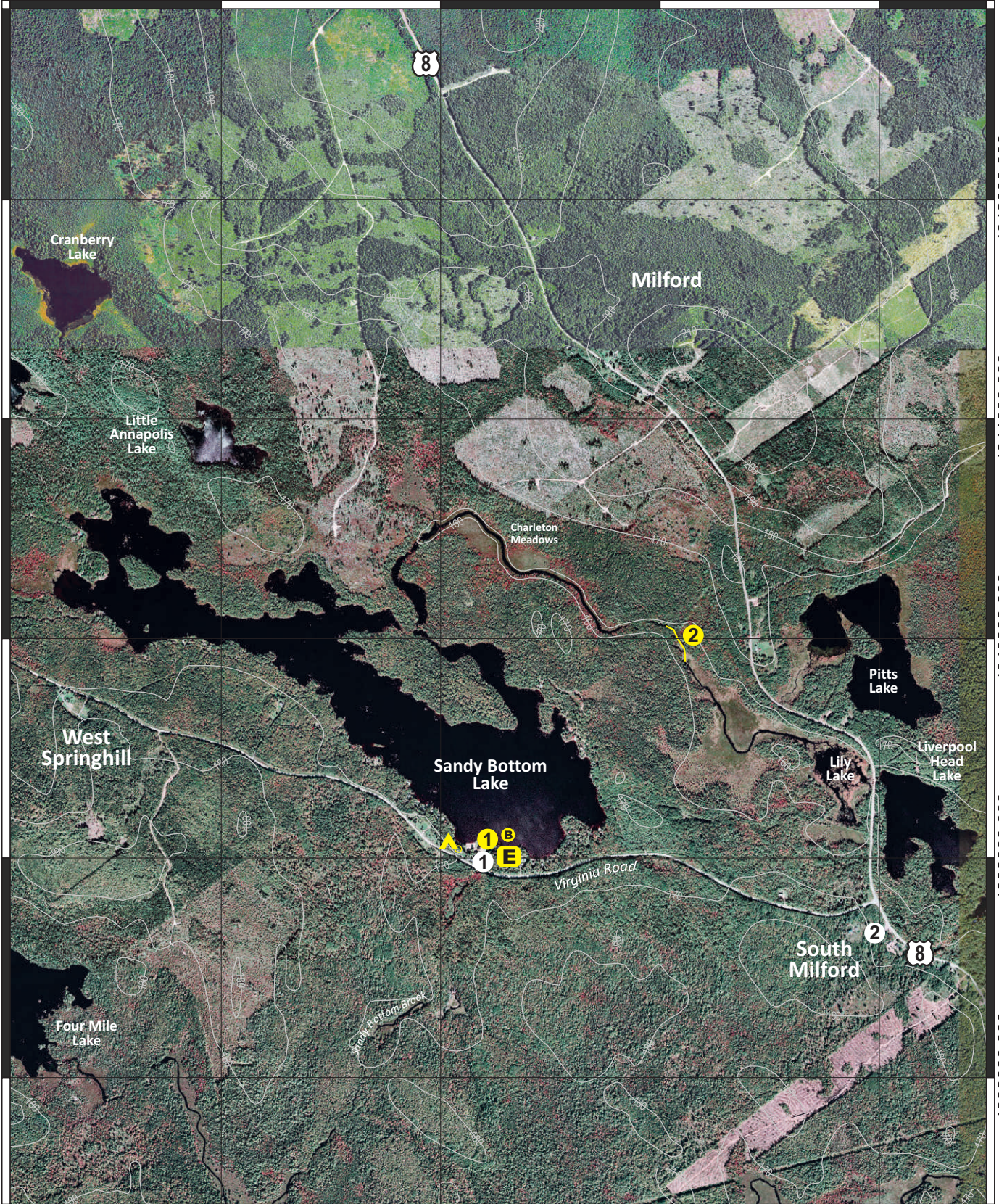
306000.000

307000.000

308000.000

309000.000

33



Disclaimer

The Municipality of the County of Annapolis does not have control over the canoe routes, portages or wilderness tent areas listed in this guide, and therefore assumes no responsibility for the safety of the canoeist paddling the route, walking the portage, or using the wilderness tent areas.

We recommend that users approach all canoe routes and wilderness tent areas in a safe and responsible manner, and conduct visual inspections whenever possible and practical.

Conditions can change through fluctuating water levels, addition of natural debris, and commercial logging activity.

As we are not the owners of any of these lands or routes, any special arrangements must be made directly with the owners and you are accountable to them for any damage, loss or other problems that you may cause.

Although the information in this guide is believed to be accurate, we assume no liability for any errors or omissions that may exist, or for changes that may have occurred on the routes after the publication of this guide.

We recommend, as a supplement to the information herein, that you use Natural Resources Canada 1:50,000 topographical series maps of the general canoe routes.

Annapolis County Recreation Services requests that you read the sections on Safety, Equipment, Trip Planning and Wilderness Ethics before you travel on the lakes and waterways of the region.

Always tell someone where you are going and when you are returning. Please be aware that many portages/canoe carries are not marked.

Map Legend

Entry, Exit Point



Landmark



Portage



River Section



Rapids



Existing Tentsite



Beach



Highway 101, Exit



Public Highway



Highlighted for clarity:



Municipal Boundary



Contour/ Elevation



Grid North



Grid Line



Scale Bar

