

Cloud Lake offers the paddler a wilderness experience within one of Nova Scotia's wilderness protected areas. A large lake, it possesses a number of islands and interesting geography that can be a challenge to novice paddlers, so be prepared for basic navigation. Access can be found at the public landing at the Northeast Arm of Cloud Lake.

Cloud Lake straddles the borders of Annapolis and Kings Counties and the surrounding land is designated as one of Nova Scotia's Protected Wilderness Areas. The use of motorized boats is prohibited on the waterways within the wilderness area. For more information on the province's wilderness areas, refer to the web site listed below.

Length: 5 km
Time: 1 day

Approach: From Middleton, travel east on Highway No.1 to Wilmot. Turn right (SOUTH) at Wilmot onto the Old Mill Road, and then turn right (SOUTH) again onto the Torbrook Road. Follow the Torbrook Road south and westerly, through Meadowvale and Torbrook Mines, to an intersection and the Torbrook United Baptist Church. Turn left (SOUTHEAST) onto the East Torbrook Road. Follow this road easterly for approximately 2.5 km, past the "Charlton Farm". There is a "*Charmine Holsteins*" sign on the right (SOUTH) side of the road, and there are two huge cement silos located on the left (NORTH) side of the road, opposite the farmhouse.

Continue past the Charleton Farm silos for approximately 0.3 km to a gravel road, known as the "*Fire Lane*", on the right (SOUTH) side of the East Torbrook Road. The Fire Lane is not posted, but does have a stop sign facing south at its intersection with the East Torbrook Road.

Turn right (SOUTH) and travel 14.4 km along the Fire Lane, past the DND Camp road and the Annapolis/Kings County boundary, until you reach a 'Y' in the road. Turn right and travel approximately 400m. Turn right (SOUTH) again and travel approximately 300m to the public landing and the Northeast Arm of Cloud Lake.

Parking: Cloud Lake Public Landing

Landmarks: 1. DND Camp sign and road
2. Cloud Lake Public Landing. The GPS coordinates for the Public Landing are:
UTM NAD83 Zone 20: 4970809.3 N, 352153.7 E
Geographic: 44° 52' 31" N, 64° 52' 18" W
Or refer to Energy, Mines & Resources Canada 1:50 000 topographic map 21A/15.

Route Classification: Novice
Portage information: No portaging required

Nova Scotia Environment Parks and Protected Areas Branch Website:
<http://novascotia.ca/parksandprotectedareas/>

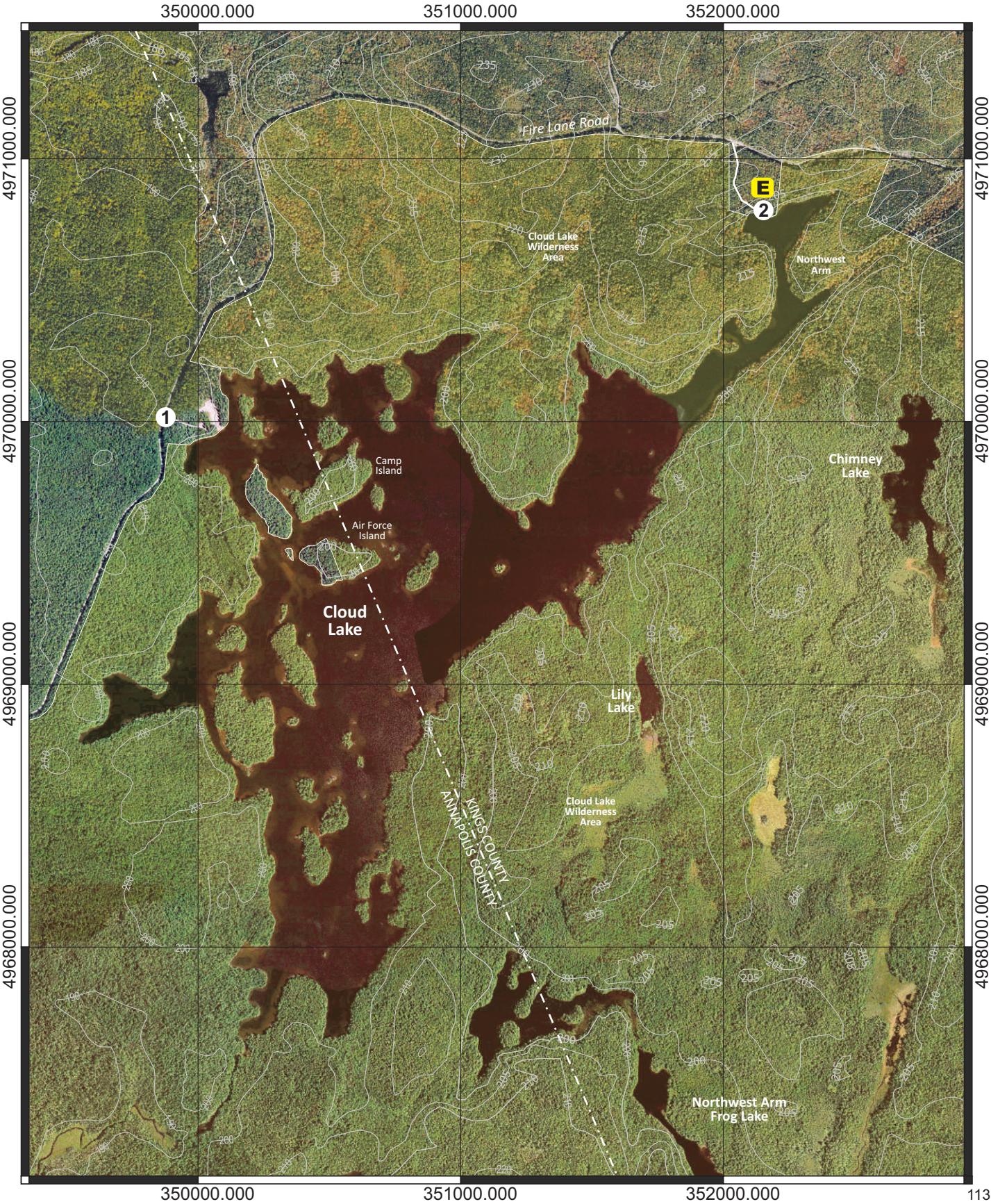
Or view an interactive map of the Parks and Protected Areas Systems Plan:
<http://www.novascotia.ca/parksandprotectedareas/plan/interactive-map/>

These sites feature information on all of Nova Scotia's National Parks and Wildlife Areas, Wilderness Areas (including Cloud Lake WA), and Nature Reserves.

Cloud Lake



Route 25



Disclaimer

The Municipality of the County of Annapolis does not have control over the canoe routes, portages or wilderness tent areas listed in this guide, and therefore assumes no responsibility for the safety of the canoeist paddling the route, walking the portage, or using the wilderness tent areas.

We recommend that users approach all canoe routes and wilderness tent areas in a safe and responsible manner, and conduct visual inspections whenever possible and practical.

Conditions can change through fluctuating water levels, addition of natural debris, and commercial logging activity.

As we are not the owners of any of these lands or routes, any special arrangements must be made directly with the owners and you are accountable to them for any damage, loss or other problems that you may cause.

Although the information in this guide is believed to be accurate, we assume no liability for any errors or omissions that may exist, or for changes that may have occurred on the routes after the publication of this guide.

We recommend, as a supplement to the information herein, that you use Natural Resources Canada 1:50,000 topographical series maps of the general canoe routes.

Annapolis County Recreation Services requests that you read the sections on Safety, Equipment, Trip Planning and Wilderness Ethics before you travel on the lakes and waterways of the region.

Always tell someone where you are going and when you are returning. Please be aware that many portages/canoe carries are not marked.

Map Legend

Entry, Exit Point



Landmark



Portage



River Section



Rapids



Existing Tentsite



Beach



Highway 101, Exit



Public Highway



Highlighted for clarity:



Municipal Boundary



Contour/ Elevation



Grid North



Grid Line



Scale Bar

