

The route consists of two lakes and a connecting stream, which is part of the Nova Scotia Power Lequille Development. Sections of Grand Lake have seen extensive cottage development, but the majority of shoreline can offer a very pleasant and secluded paddle, with excellent sand beaches and isolated coves. A dam at the outlet allows NSP to regulate water levels in the lake.

Grand Lake Flowage was created by NSP, flooding the stillwaters of the Allains River immediately below (NORTH) of Grand Lake, allowing them to divert water via a man-made canal to the Lequille power generating station. The Flowage is not developed, and offers shallow waters, and a varied and convoluted shoreline.

Some paddlers prefer to paddle the canal, and it offers a pleasant paddle that is normally protected from the winds. The canal route is not part of the canoe guide.

Length: 8 km
Time: 1 day

Approach: **Grand Lake Dam:** South from Annapolis Royal approximately 7 km on Highway No. 8 to West Grand Lake Road, leading to Grand Lake Dam.

Grand Lake Flowage: South from Annapolis Royal approximately 6 km to juncture of Highway 101. Follow Highway 101 west 3.2 km to Grand Lake Flowage.

Entry, Exit Points:

Grand Lake Dam: On right (WEST) side of Highway No. 8, 200m south of the old Graywood Construction Debris Site (indicated by a chain-link fence on the east side of Highway 8). Follow West Grand Lake Road 2.5 km to Grand Lake Dam. Launch above or below dam.

Grand Lake Flowage: Launch on left (SOUTHEAST) side of Highway 101, where Flowage meets highway.

Parking: Grand Lake Dam
On shoulder of Highway 101 at Grand Lake Flowage

Landmarks: 1. Mickey Hill Provincial Park

Route Classification: Novice

Portage Information:

1. 174m On left (NORTH) side of runs.
2. 77m On right (SOUTH) side of runs.

Grand Lake and Grand Lake Flowage



SCALE 0 1000 METRES

Route 2

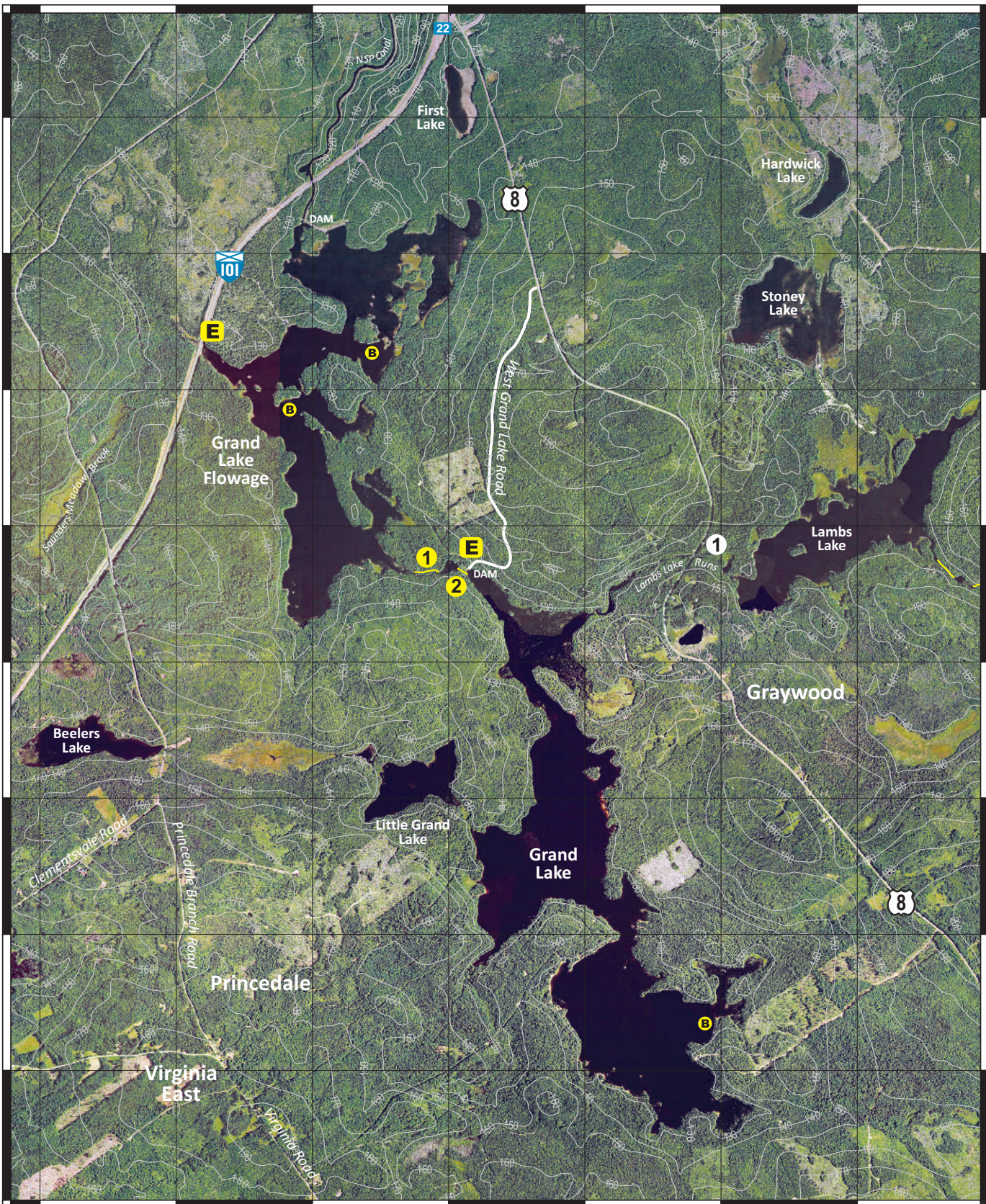
300000.000 301000.000 302000.000 303000.000 304000.000 305000.000 306000.000

4952000.000
4951000.000
4950000.000
4949000.000
4948000.000
4947000.000
4946000.000
4945000.000

4952000.000
4951000.000
4950000.000
4949000.000
4948000.000
4947000.000
4946000.000
4945000.000

300000.000 301000.000 302000.000 303000.000 304000.000 305000.000 306000.000

31



Disclaimer

The Municipality of the County of Annapolis does not have control over the canoe routes, portages or wilderness tent areas listed in this guide, and therefore assumes no responsibility for the safety of the canoeist paddling the route, walking the portage, or using the wilderness tent areas.

We recommend that users approach all canoe routes and wilderness tent areas in a safe and responsible manner, and conduct visual inspections whenever possible and practical.

Conditions can change through fluctuating water levels, addition of natural debris, and commercial logging activity.

As we are not the owners of any of these lands or routes, any special arrangements must be made directly with the owners and you are accountable to them for any damage, loss or other problems that you may cause.

Although the information in this guide is believed to be accurate, we assume no liability for any errors or omissions that may exist, or for changes that may have occurred on the routes after the publication of this guide.

We recommend, as a supplement to the information herein, that you use Natural Resources Canada 1:50,000 topographical series maps of the general canoe routes.

Annapolis County Recreation Services requests that you read the sections on Safety, Equipment, Trip Planning and Wilderness Ethics before you travel on the lakes and waterways of the region.

Always tell someone where you are going and when you are returning. Please be aware that many portages/canoe carries are not marked.

Map Legend

Entry, Exit Point



Landmark



Portage



River Section



Rapids



Existing Tentsite



Beach



Highway 101, Exit



Public Highway



Highlighted for clarity:



Municipal Boundary



Contour/ Elevation



Grid North



Grid Line



Scale Bar

