

The route consists of two separate lakes, not connected by a common watercourse, and will require a separate launch into each. Both lakes are easily accessible, and developed to an extent with cottages. They offer a pleasant, easy paddle.

The West River route description will be developed in the Summer of 2016 and will be available on our website: AnnapolisCounty.ca. A portion of the river, where it flows into Lake Pleasant from the west, is shown on the map.

Length: 4.0 km
Time: 1 day
Approach: South from Middleton 46 km along Highway No. 10 to Springfield, and the intersection of the Lake Pleasant Road.

Entry, Exit Points:

Springfield Lake: Left (NORTHEAST) on Hastings Road 600m to intersection off road to lake. Right (SOUTHEAST) on road 300m to lake. Launch at beach in Community Park.
Lake Pleasant: Right (SOUTHWEST) on Lake Pleasant Road 1.2 km to a small park on east of the bridge at West River.

Parking:

Springfield Lake: At Entry, Exit Point. The launch site is located in the Springfield Union Picnic Grounds Park which is owned by a non-profit community organization in Springfield. Parking is available.
Lake Pleasant: On left, east side of the road. The launch site is located at the Lake Pleasant Park and Boat Launch, owned by the County of Annapolis. Parking is available at the site.
West River: Located west of the Lake Pleasant Park and Boat Launch. A short carry across the road into the West River will allow paddlers another paddling experience. The West River is a long narrow river that offers a different experience and with a series of canoe carries and lifts this route connects to Big LaHave Lake. Watch for details of this route on our website.

Landmarks:

1. Church
2. Tammy's Country Stop (community store, 997 Highway 10)
3. Springfield and District Fire Hall

Route Classification: Novice

Portage Information: Portaging required on West River only. Refer to our website for more detailed information in the future.

Interesting information:

Springfield Lake was home to The Davidson Lumber Mill, operated under the name of the "Davidson Lumber Company". The mill was the largest ever in Nova Scotia, built in 1902 and said to be the largest this side of Montreal. The mill's smokestack was 140 feet high, 40 feet of brick and 100 feet of steel and it was 8 feet in diameter. It was located on the north east corner of the lake. *Source: Hastings - Our community from the past created by the Golden Age Seniors Club.*

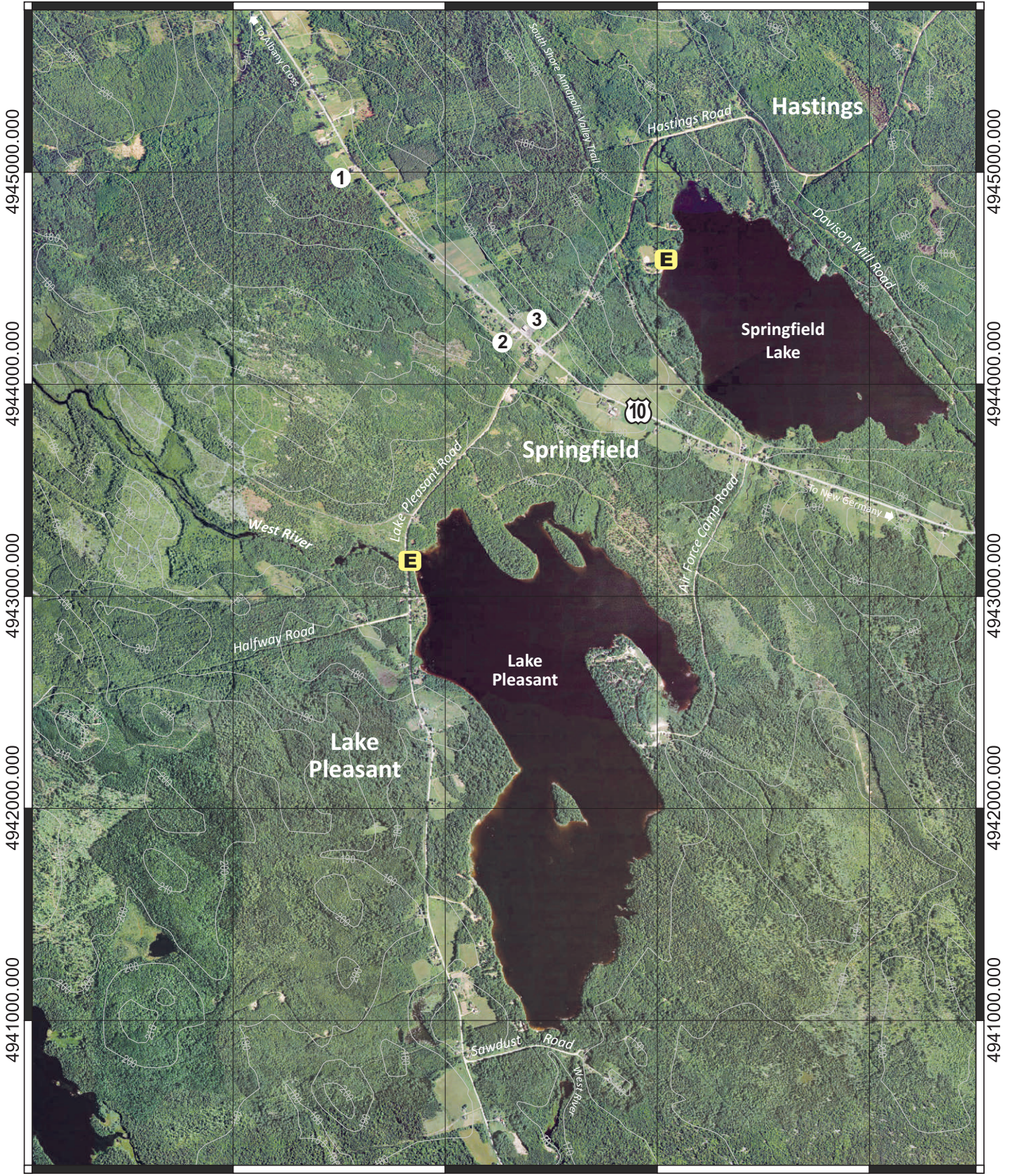
Lake Pleasant is home to 14 Wing Greenwood's Lake Pleasant Recreation Facility. It is located on a peninsula of land on the south side of the lake.

350000.000

351000.000

352000.000

353000.000



Disclaimer

The Municipality of the County of Annapolis does not have control over the canoe routes, portages or wilderness tent areas listed in this guide, and therefore assumes no responsibility for the safety of the canoeist paddling the route, walking the portage, or using the wilderness tent areas.

We recommend that users approach all canoe routes and wilderness tent areas in a safe and responsible manner, and conduct visual inspections whenever possible and practical.

Conditions can change through fluctuating water levels, addition of natural debris, and commercial logging activity.

As we are not the owners of any of these lands or routes, any special arrangements must be made directly with the owners and you are accountable to them for any damage, loss or other problems that you may cause.

Although the information in this guide is believed to be accurate, we assume no liability for any errors or omissions that may exist, or for changes that may have occurred on the routes after the publication of this guide.

We recommend, as a supplement to the information herein, that you use Natural Resources Canada 1:50,000 topographical series maps of the general canoe routes.

Annapolis County Recreation Services requests that you read the sections on Safety, Equipment, Trip Planning and Wilderness Ethics before you travel on the lakes and waterways of the region.

Always tell someone where you are going and when you are returning. Please be aware that many portages/canoe carries are not marked.

Map Legend

Entry, Exit Point



Landmark



Portage



River Section



Rapids



Existing Tentsite



Beach



Highway 101, Exit



Public Highway



Highlighted for clarity:



Municipal Boundary



Contour/ Elevation



Grid North



Grid Line



Scale Bar

