

The route consists of four lakes varying in size from very small to very large and convoluted. Big Kelly Bog is a pleasant, meandering meadow that eventually broadens out into Big Molly Upsim Lake. The lake is dotted with innumerable islands, points, and coves that offer hours of exploration. Threading a course southward through the lake is an interesting, if somewhat challenging, orienteering exercise. Big Molly should be approached with caution in unfavourable wind conditions, yet the many islands and points will offer natural wind breaks to the paddler.

Little Molly Upsim Lake is quite small in comparison, as is Kelly Lake. Lake Alma was the site, generations ago, of extensive log driving activities, and remains of the wooden dams and sluiceways can still be seen. Caution is advised when approaching these structures, as the channels still bear the remnants of submerged timbers and their accompanying iron rods, fittings and spikes. More recent logging activity is also evident in the area, and the paddler may encounter vehicles and large trucks on the portage from Kelly Lake to Lake Alma.

Lake Alma serves also as an Entry, Exit point for Route 7, Hendry Lake and its connection to the Milford Lakes system, Route 4. The lake is also the only Entry point for Route 21, East Branch Medway River.

Length: 19 km
Time: 2 days

Approach: South from Middleton 28 km along Highway No. 10 to Albany Cross and the intersection of the West Dalhousie and Halfway roads. Right (WEST) on West Dalhousie Road 3 km to Kelly Bridge.

Entry, Exit Points:

Kelly Bridge: On left (SOUTH) side of Kelly Bridge. Launch at Kelly Brook.
Randolph Stream: Follow Route 4, Milford Lakes to First Branch Lake and Entry Point to Route 7 Hendry Lake. Follow Route 7 to Randolph Stream and Lake Alma.

Approaching Lake Alma from the Milford Lakes system is an alternative that requires more effort, planning, and time. The Kelly Bridge Entry Point is therefore generally recommended.

Parking: At Kelly Bridge, on north side of road in clearing.

Route Classification: Intermediate

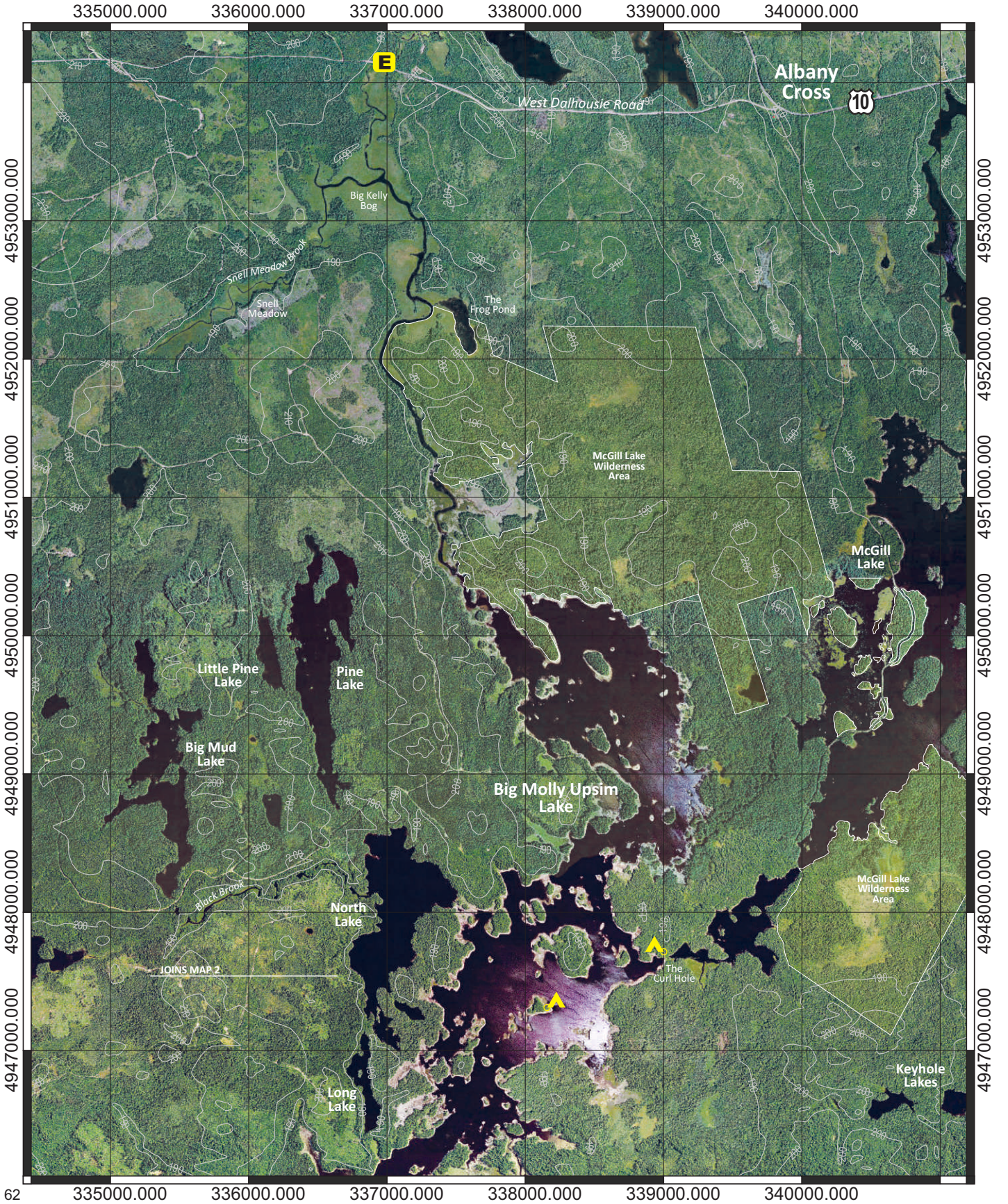
Portage Information:

1. 35 m On right (NORTHWEST) side of brook.
2. 785 m On west side of cove. Follow old logging road to Kelly Lake.
3. 1.4 km On right (NORTH) side of outlet. Carry along logging road 150m to intersection of main haul road. Right (NORTHWEST) along haul road approximately 1 km to intersection of road to Lake Alma. Left (WEST) along road 250m to lake.
4. Entry, Exit Point to Route 7, Hendry Lake.
5. Entry Point to Route 21, East Branch Medway River.

Lake Alma



Route 14, Map 1

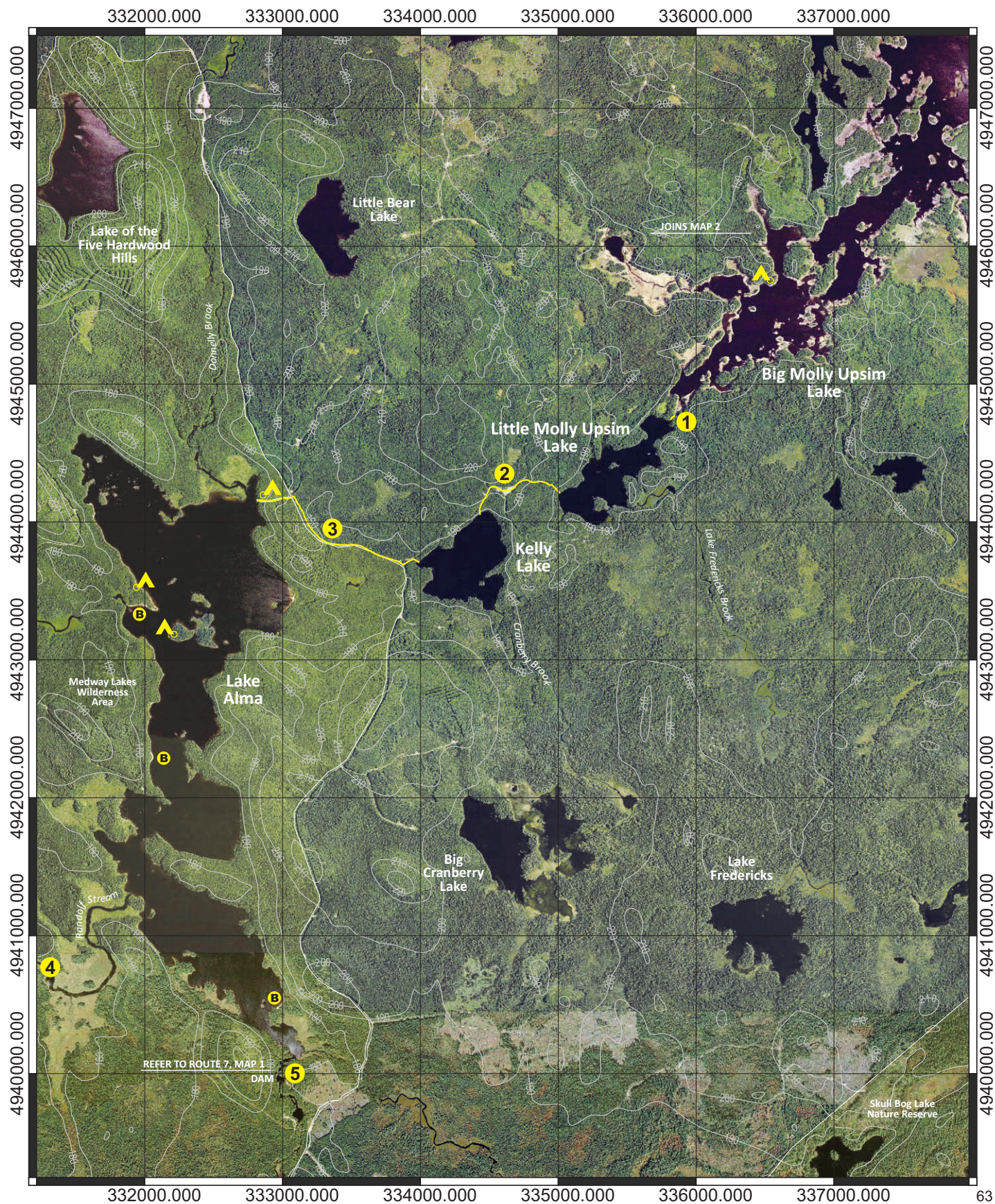


Lake Alma



SCALE 0 1000 METRES

Route 14, Map 2



Disclaimer

The Municipality of the County of Annapolis does not have control over the canoe routes, portages or wilderness tent areas listed in this guide, and therefore assumes no responsibility for the safety of the canoeist paddling the route, walking the portage, or using the wilderness tent areas.

We recommend that users approach all canoe routes and wilderness tent areas in a safe and responsible manner, and conduct visual inspections whenever possible and practical.

Conditions can change through fluctuating water levels, addition of natural debris, and commercial logging activity.

As we are not the owners of any of these lands or routes, any special arrangements must be made directly with the owners and you are accountable to them for any damage, loss or other problems that you may cause.

Although the information in this guide is believed to be accurate, we assume no liability for any errors or omissions that may exist, or for changes that may have occurred on the routes after the publication of this guide.

We recommend, as a supplement to the information herein, that you use Natural Resources Canada 1:50,000 topographical series maps of the general canoe routes.

Annapolis County Recreation Services requests that you read the sections on Safety, Equipment, Trip Planning and Wilderness Ethics before you travel on the lakes and waterways of the region.

Always tell someone where you are going and when you are returning. Please be aware that many portages/canoe carries are not marked.

Map Legend

Entry, Exit Point



Landmark



Portage



River Section



Rapids



Existing Tentsite



Beach



Highway 101, Exit



Public Highway



Highlighted for clarity:



Municipal Boundary



Contour/ Elevation



Grid North



Grid Line



Scale Bar

