

The route follows a section of the east branch of the Round Hill River, coursing through low meadow and gentle, flat water. The entry point at Gibsons Mill was the site of a water-powered saw mill generations ago, where pieces of mill gear can still be found in and around the brook. The route is undeveloped, and offers a secluded paddle through its entire length. There are no sand beaches along this route, but local people have traditionally used a sandy portion of the brook, at the bridge on the Spurr Road, for swimming. The portages are not well established, but are relatively short. In moderate to high water levels, it is possible to line those portions that are not navigable.

**Length:** 6 km  
**Time:** 1 day

**Approach:** South from Annapolis Royal on Highway No. 8 to Lequille and intersection with West Dalhousie Road. Southeast and east on West Dalhousie Road 7 km to intersection of Perotte Road. Continue on gravel portion of West Dalhousie Road 8.5 km to entry point at Gibsons Mill.

**Entry, Exit Points:**  
Gibsons Mill 4.5 km east of intersection of West Dalhousie Road and Spurr Road. Enter where stillwater adjoins road, 50 m downstream from bridge.  
Spurr Road Exit at bridge, or explore downstream to the end of the stillwater.

**Parking:** Available at Entry, Exit points.

**Route Classification:** Novice

**Portage Information:**

- 1. 10 m Left (WEST) to Barrys Stillwater.
- 2. 100 m Right (EAST) 60m along logging road. Left (EAST) 40m to The Musquash. Not marked.
- 3. 400m On left (SOUTH) side of river at end of Barrys Stillwater. Not well marked.
- 4. 300m On left (SOUTH) side of river at end of small stillwater. Not well marked.



Barrys Stillwater



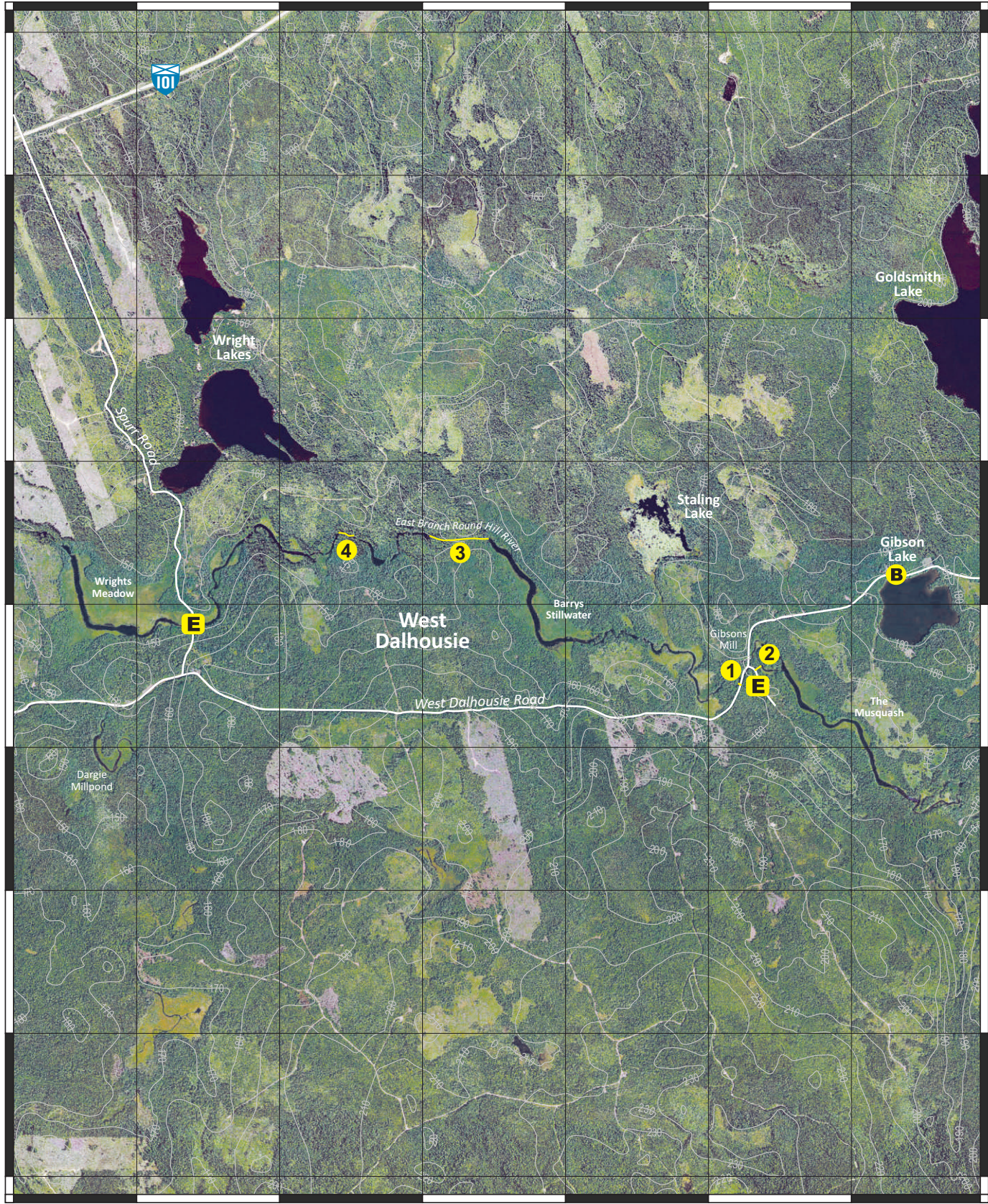
Route 11

312000.000 313000.000 314000.000 315000.000 316000.000 317000.000

4957000.000  
4956000.000  
4955000.000  
4954000.000  
4953000.000  
4952000.000  
4951000.000

4957000.000  
4956000.000  
4955000.000  
4954000.000  
4953000.000  
4952000.000  
4951000.000

312000.000 313000.000 314000.000 315000.000 316000.000 317000.000





# Disclaimer

The Municipality of the County of Annapolis does not have control over the canoe routes, portages or wilderness tent areas listed in this guide, and therefore assumes no responsibility for the safety of the canoeist paddling the route, walking the portage, or using the wilderness tent areas.

We recommend that users approach all canoe routes and wilderness tent areas in a safe and responsible manner, and conduct visual inspections whenever possible and practical.

Conditions can change through fluctuating water levels, addition of natural debris, and commercial logging activity.

As we are not the owners of any of these lands or routes, any special arrangements must be made directly with the owners and you are accountable to them for any damage, loss or other problems that you may cause.

Although the information in this guide is believed to be accurate, we assume no liability for any errors or omissions that may exist, or for changes that may have occurred on the routes after the publication of this guide.

We recommend, as a supplement to the information herein, that you use Natural Resources Canada 1:50,000 topographical series maps of the general canoe routes.

Annapolis County Recreation Services requests that you read the sections on Safety, Equipment, Trip Planning and Wilderness Ethics before you travel on the lakes and waterways of the region.

Always tell someone where you are going and when you are returning. Please be aware that many portages/canoe carries are not marked.

## Map Legend

Entry, Exit Point



Landmark



Portage



River Section



Rapids



Existing Tentsite



Beach



Highway 101, Exit



Public Highway



Highlighted for clarity:



Municipal Boundary



Contour/ Elevation



Grid North



Grid Line



Scale Bar

