

The route consists of two lakes that are connected by a small brook, but by no established portage. To explore both lakes and adjoining watercourses, it will be necessary to launch separately into each. Both lakes have cottage development, but offer a pleasant paddle and stretches of quiet shoreline. The Round Hill River segments of Jerry Lake are not developed, coursing for the most part through low meadow, and offer the opportunity to observe waterfowl, beaver, and muskrat in an undisturbed setting.

**Length:** 3.5 km

**Time:** 1 day

**Approach:** South from Annapolis Royal 2.9 km on Highway No. 8 to Lequille and intersection with West Dalhousie Road. Left (SOUTHEAST) on West Dalhousie Road 5 km to Lake Larose.

**Entry, Exit Points:**

Lake La Rose: 5 km south of Lequille on north side of West Dalhousie Road where Lake Larose adjoins highway.

Meadow Bridge: 6.5 km south of Lequille on north and south side of West Dalhousie Road, where culverts cross underneath highway.

**Parking:** On shoulder of highway at Entry, Exit points.

**Route Classification:** Novice

**Portage Information:**

1: Navigable with one small lift.

307000.000

308000.000

4955000.000

4955000.000

4954000.000

4954000.000

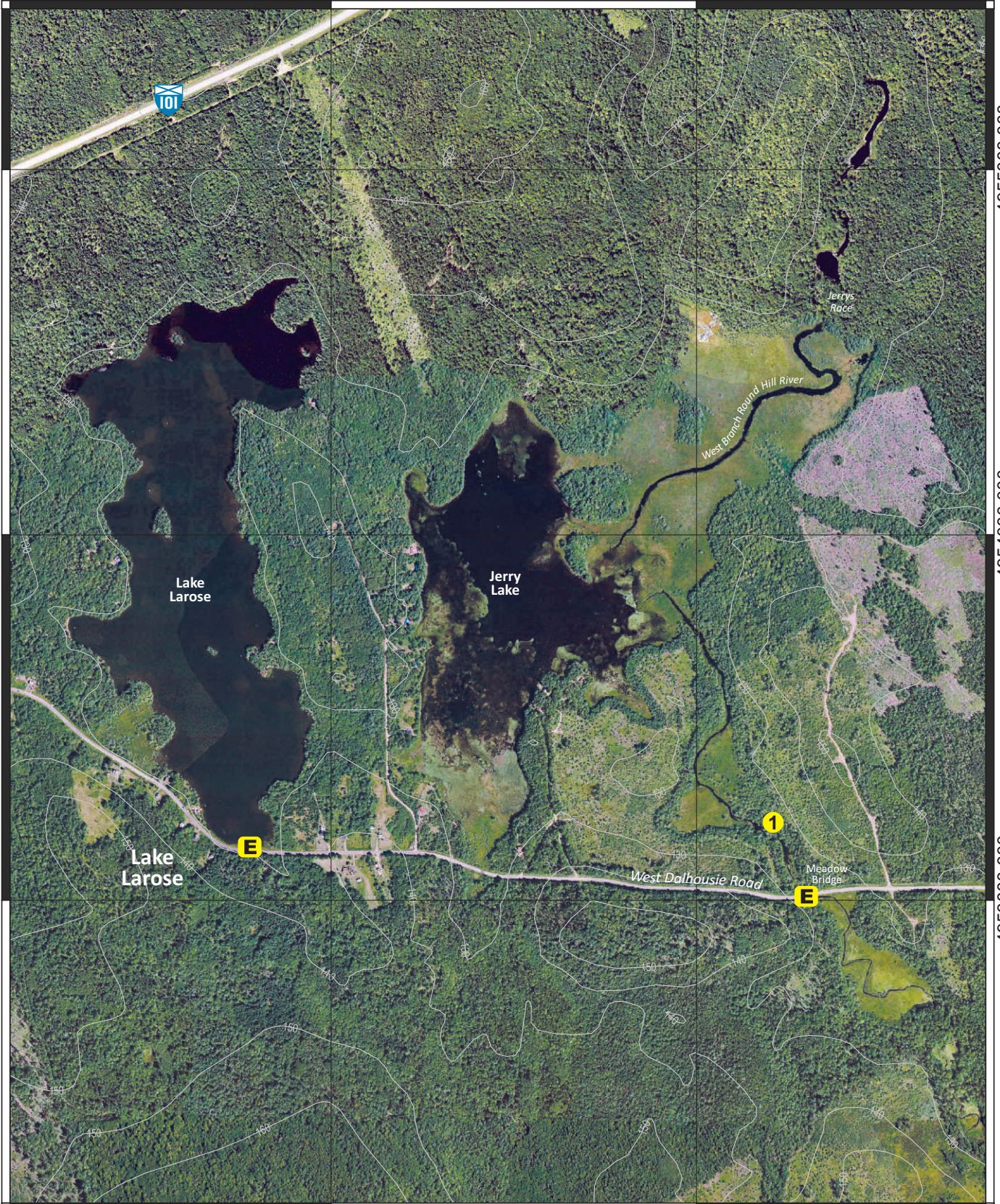
4953000.000

4953000.000

54

307000.000

308000.000



# Disclaimer

The Municipality of the County of Annapolis does not have control over the canoe routes, portages or wilderness tent areas listed in this guide, and therefore assumes no responsibility for the safety of the canoeist paddling the route, walking the portage, or using the wilderness tent areas.

We recommend that users approach all canoe routes and wilderness tent areas in a safe and responsible manner, and conduct visual inspections whenever possible and practical.

Conditions can change through fluctuating water levels, addition of natural debris, and commercial logging activity.

As we are not the owners of any of these lands or routes, any special arrangements must be made directly with the owners and you are accountable to them for any damage, loss or other problems that you may cause.

Although the information in this guide is believed to be accurate, we assume no liability for any errors or omissions that may exist, or for changes that may have occurred on the routes after the publication of this guide.

We recommend, as a supplement to the information herein, that you use Natural Resources Canada 1:50,000 topographical series maps of the general canoe routes.

Annapolis County Recreation Services requests that you read the sections on Safety, Equipment, Trip Planning and Wilderness Ethics before you travel on the lakes and waterways of the region.

Always tell someone where you are going and when you are returning. Please be aware that many portages/canoe carries are not marked.

## Map Legend

Entry, Exit Point



Landmark



Portage



River Section



Rapids



Existing Tentsite



Beach



Highway 101, Exit



Public Highway



Highlighted for clarity:



Municipal Boundary



Contour/ Elevation



Grid North



Grid Line



Scale Bar

